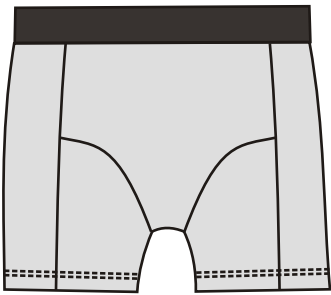




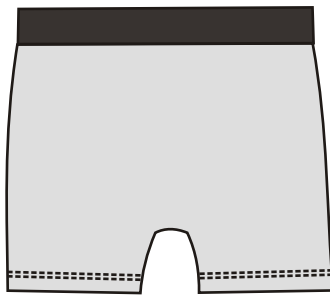
Pin-up Girls

Men's Underwear

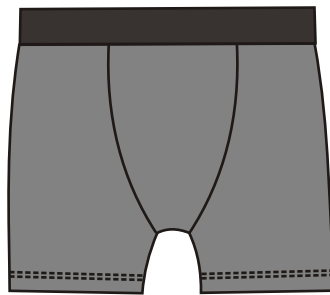
in sizes 30"-44" (76-111 cm)



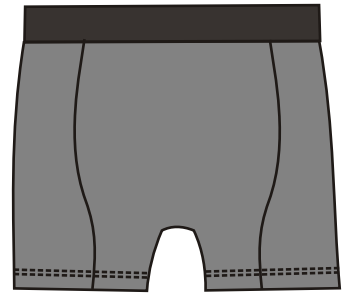
Lillebror front



Lillebror back



Michael front



Michael back

Mens underwear styles Michael and Lillebror have either classic American or modern European styling. They each feature over-the-top access, and an optional support sling inside the front panel to keep the parts separated and prevent chafing. Both views can be made from a variety of knitted fabrics, including cotton spandex, microfibre, bamboo, rayon or even performance fabrics.

Michael has a curved front panel and shaped back seaming, while Lillebror has a shapely front that can be made from contrast fabric. The forward side seam is a fashion detail and it also has no seams across the back.

Materials list for both views:

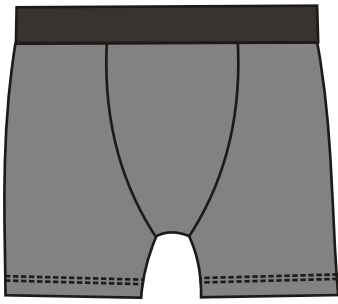
.5 m of knit fabric with at least 50% stretch in the crosswise grain such as cotton/spandex, nylon/spandex or polyester/spandex blends

1.5 m of 1.5"- 2" (37-52 mm) wide elastic for the waist

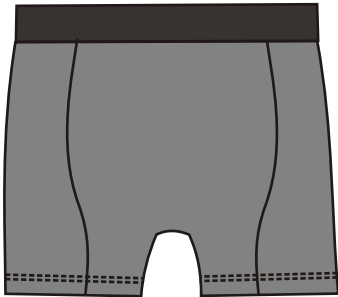
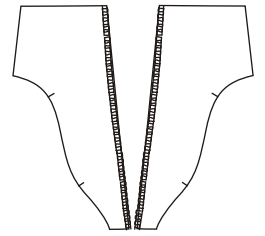
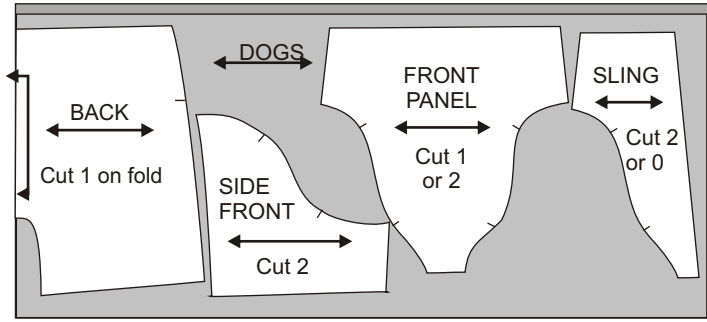
Size	A	B	C	D	E	F	G	H
Waist Inches	30"	32"	34"	36"	38"	40"	42"	44"
Waist cms	76 cm	81 cm	86 cm	91 cm	96 cm	101 cm	106 cm	111 cm

Bra-makers Supply, Hamilton, ON, Canada

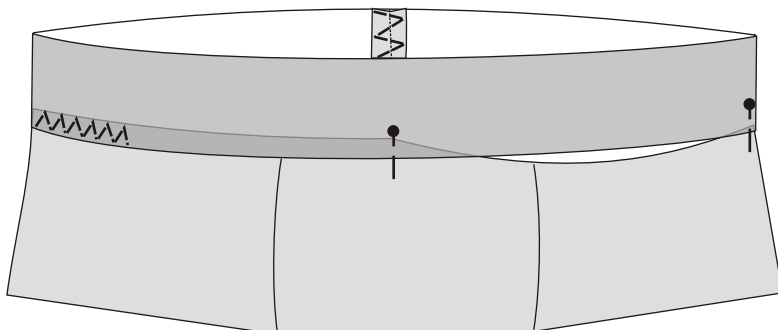
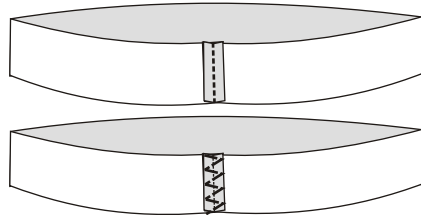
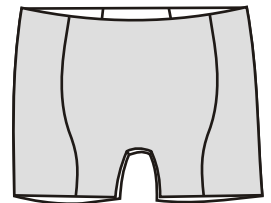
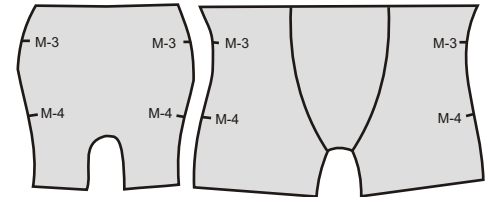
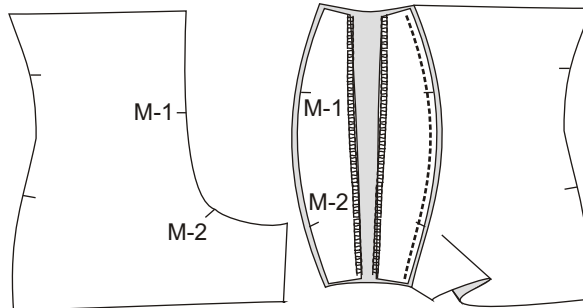
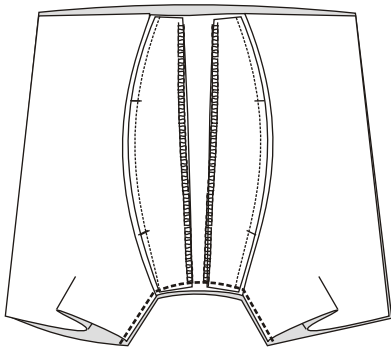
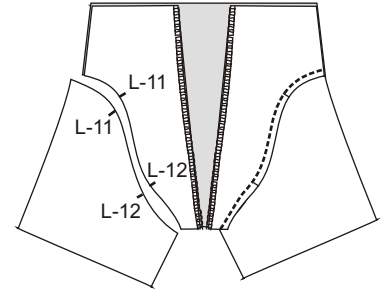
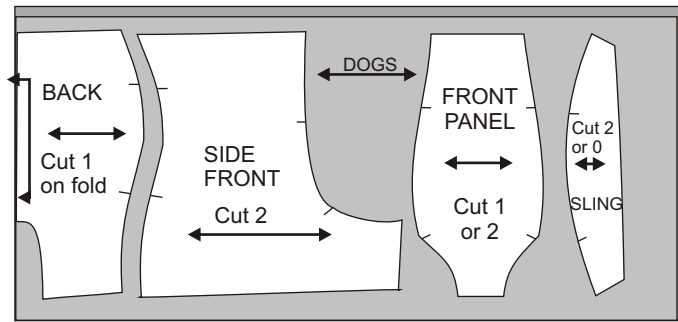
www.bramakers.com

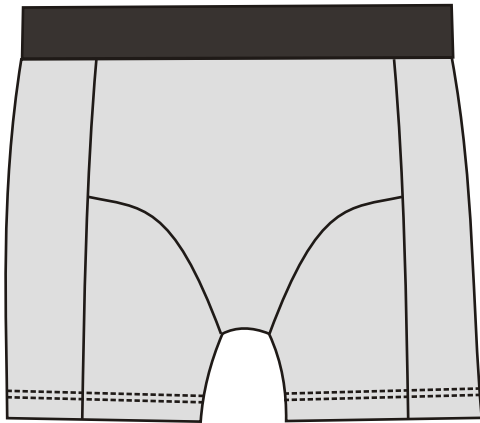


Michael front

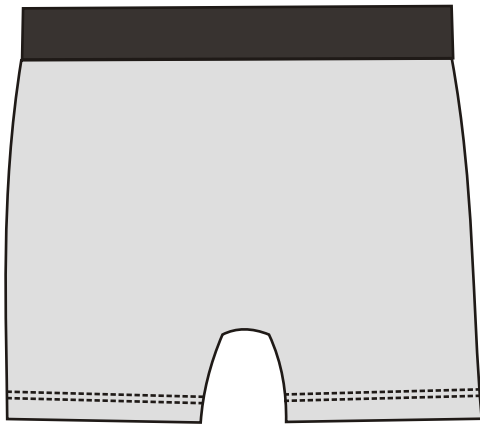


Michael back

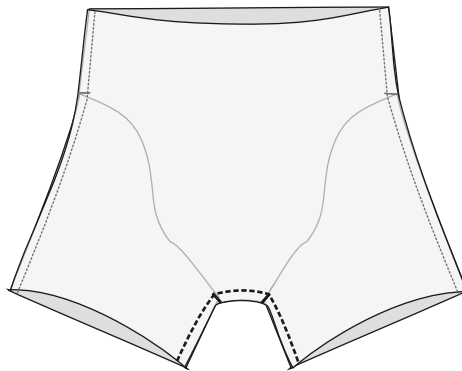
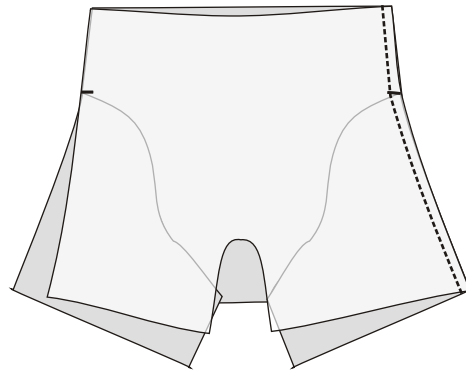
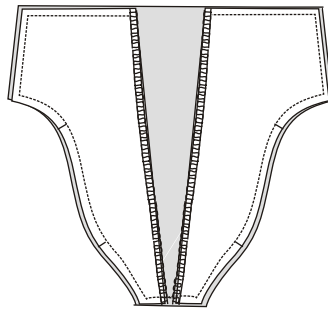
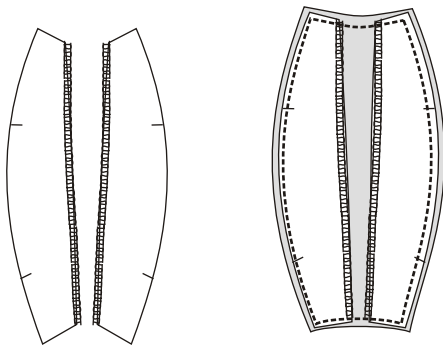




Lillebror front



Lillebror back



Pin-up Girls
 #8030 Mens Underwear

Lillebror front *Michael front*
Lillebror back *Michael back*